

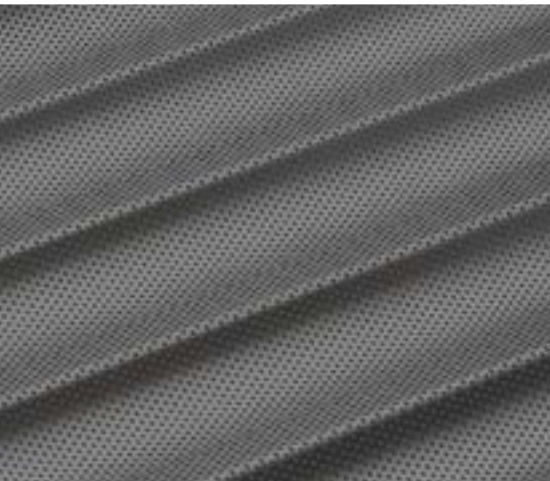


American Pan® UK

Industrial Baking Pans & Coatings

A BUNDY BAKING SOLUTION

Stock Catalogue



Innovation & Tradition



Table of Contents

Bread Tins & Lids	4-8
Baguette Trays.....	9
Baking Trays.....	10-11
Bun & Roll Trays.....	12-13
Muffin Trays	14-15
Cake Tins.....	16
Pizza Trays.....	17-19
World-Class Coatings.....	20
Bakeware Refurbishment	21
The Bundy Baking Solutions CREED....	22
Product Index	23

For bakeware use and care instructions, complete information on our custom manufacturing capabilities, or to view our latest products, news, and events, visit our website at americanpan.com.





American Pan UK offers bread tins and lids, baguette trays, baking trays, bun and roll trays, muffin trays, cake tins, and pizza trays, all in common sizes for quick delivery to meet your needs. All bakeware is designed to be used on a 762 mm x 457 mm (30" x 18") rack, manufactured with the same precision and expertise as our custom pans, and available natural or with one of our exclusive coatings. We are committed to delivering unparalleled quality, expertise, and service to our customers.

Quality

- **Best Bakeware:** From the materials of construction to the details of design, our products are created to provide our customers with the highest quality, longest lasting bakeware.
- **Best Coatings:** Our proprietary coatings outperform everything else on the market.
- **Superior Performance:** Our materials and coatings provide unmatched durability and strength, and we continually innovate to make products safer, more sanitary, and environmentally sound.

Expertise

- **Deep Experience:** We began creating quality bakeware over 30 years ago—and continually work to innovate and enhance our products.
- **Precision Manufacturing:** Our products are designed and manufactured in our state-of-the-art factories for unmatched quality and performance.
- **Custom Solutions:** Need something unique? We will create custom pans to meet your exact specifications and needs.
- **Singular Focus:** We manufacture bakeware; that is our expertise. This focus allows us to put all efforts toward creating the highest quality, most innovative bakeware in the world.

Service

- **Outstanding Service:** American Pan is a family-owned company, and our deep passion for the baking industry is matched only by our commitment to exceptional service.
- **Guaranteed Satisfaction:** In addition to the confidence of working with the world's largest baking pan manufacturer, you can enjoy the peace of mind that comes with knowing your satisfaction is 100% guaranteed.

Advancing the Baking Industry

American Pan is the world's leading provider of custom and stock baking pans, pan coatings, and pan refurbishment services. We have dedicated facilities in Brazil, Ireland, Norway, Romania, Spain, Sweden, UK, and the United States. American Pan is part of the Bundy Baking Solutions family of companies. For more information visit bundybakingsolutions.com.



Bread Tins & Lids



SINGLE BREAD TINS

BTN 167

400 gram standard, fabricated construction, wire in rim, UTI holes, corrugated sides



0.8 mm Aluminized steel, Safe for use with food, Maximum heat rating of 260°C, Refurbishment available (minimum quantities may apply)



Coating Options

Natural*
AMERICOAT®
OptiShield®

*Coating shown in photo

Individual Tin Size (mm)
Top Inside: 190 x 101
Bottom Outside: 181 x 91
Depth: 91

Weight Each (kg): 0.53

BTN 170

800 gram premium, deep drawn, rolled top edge, UTI holes, plain sides



0.8 mm Aluminized steel, Safe for use with food, Maximum heat rating of 260°C, Refurbishment available (minimum quantities may apply)



Coating Options

Natural
AMERICOAT®
OptiShield®*

*Coating shown in photo

Individual Tin Size (mm)
Top Inside: 303 x 122
Bottom Outside: 294 x 113
Depth: 125

Weight Each (kg): 0.87

BTN 172

400 gram farmhouse, deep drawn, rolled top edge, UTI holes, plain sides



0.8 mm Aluminized steel, Safe for use with food, Maximum heat rating of 260°C, Refurbishment available (minimum quantities may apply)



Coating Options

Natural
AMERICOAT®*
OptiShield®

*Coating shown in photo

Individual Tin Size (mm)
Top Inside: 175 x 124
Bottom Outside: 163 x 113
Depth: 76

Weight Each (kg): 0.38

BTN 173

800 gram farmhouse, deep drawn, rolled top edge, UTI holes, plain sides



0.8 mm Aluminized steel, Safe for use with food, Maximum heat rating of 260°C, Refurbishment available (minimum quantities may apply)



Coating Options

Natural
AMERICOAT®
OptiShield®*

*Coating shown in photo

Individual Tin Size (mm)
Top Inside: 255 x 140
Bottom Outside: 241 x 126
Depth: 80

Weight Each (kg): 0.56



BTN 777

800 gram standard, deep drawn, wire in rim, UTI holes, plain sides



0.8 mm Aluminized steel, Safe for use with food, Maximum heat rating of 260°C, Refurbishment available (minimum quantities may apply)



Coating Options

Natural*
AMERICOAT®
OptiShield®

*Coating shown in photo

Individual Tin Size (mm)

Top Inside: 238 x 121
Bottom Outside: 225 x 110
Depth: 121

Weight Each (kg): 0.70

BTN 778

800 gram sandwich/premium, deep drawn, wire in rim, UTI holes, plain sides



0.8 mm Aluminized steel, Safe for use with food, Maximum heat rating of 260°C, Refurbishment available (minimum quantities may apply)



Coating Options

Natural
AMERICOAT®
OptiShield®*

*Coating shown in photo

Individual Tin Size (mm)

Top Inside: 264 x 124
Bottom Outside: 250 x 112
Depth: 147

Weight Each (kg): 0.90

BTN 779

400 gram standard, deep drawn, wire in rim, UTI holes, plain sides



0.8 mm Aluminized steel, Safe for use with food, Maximum heat rating of 260°C, Refurbishment available (minimum quantities may apply)



Coating Options

Natural
AMERICOAT®**
OptiShield®

*Coating shown in photo

Individual Tin Size (mm)

Top Inside: 191 x 108
Bottom Outside: 178 x 96
Depth: 116

Weight Each (kg): 0.55

AMERICOAT® Coating

AMERICOAT® is our proprietary silicone glaze formulated specifically for baking. See page 20 for more information on this coating and all other coating options.



Bread Tins & Lids



3-IN-LINE BREAD TINS/LIDS

BRS 283

800 gram farmhouse, deep drawn, plain sided



0.8 mm Aluminized steel, Safe for use with food, Maximum heat rating of 260°C, Refurbishment available (minimum quantities may apply)



Coating Options

Natural*
AMERICOAT®
OptiShield®

*Coating shown in photo

Individual Tin Size (mm)

Top Inside: 229 x 140
Bottom Outside: 219 x 130
Depth: 76

Weight Each (kg): 2.20

Overall Size (mm): 454 x 239 x 76

BRS 284

400 gram farmhouse, wire in rim, plain sided



0.8 mm Aluminized steel, Safe for use with food, Maximum heat rating of 260°C, Refurbishment available (minimum quantities may apply)



Coating Options

Natural
AMERICOAT®
OptiShield®*

*Coating shown in photo

Individual Tin Size (mm)

Top Inside: 175 x 124
Bottom Outside: 164 x 113
Depth: 60

Weight Each (kg): 1.73

Overall Size (mm): 454 x 183 x 61

BRS 352

800 gram premium, deep drawn, rolled top edge, UTI holes, plain sides



0.8 mm Aluminized steel, Safe for use with food, Lid available, Maximum heat rating of 260°C, Refurbishment available (minimum quantities may apply)



Coating Options

Natural
AMERICOAT®**
OptiShield®

*Coating shown in photo

Individual Tin Size (mm)

Top Inside: 303 x 122
Bottom Outside: 294 x 113
Depth: 125

Weight Each (kg): 3.70

Overall Size (mm): 445 x 314 x 126

BRS 957

800 gram standard, deep drawn, wire in rim, UTI holes, plain sides



0.8 mm Aluminized steel, Safe for use with food, Lid available, Maximum heat rating of 260°C, Refurbishment available (minimum quantities may apply)



Coating Options

Natural
AMERICOAT®
OptiShield®*

*Coating shown in photo

Individual Tin Size (mm)

Top Inside: 238 x 121
Bottom Outside: 225 x 110
Depth: 121

Weight Each (kg): 2.90

Overall Size (mm): 448 x 248 x 122



BRS 958

800 gram long sandwich/premium, deep drawn, wire in rim, UTI holes, plain sides



0.8 mm Aluminized steel, Safe for use with food, Lid available, Maximum heat rating of 260°C, Refurbishment available (minimum quantities may apply)



Coating Options

Natural*
AMERICOAT®
OptiShield®

*Coating shown in photo

Individual Tin Size (mm)

Top Inside: 264 x 124

Bottom Outside: 250 x 112

Depth: 147

Weight Each (kg): 3.51

Overall Size (mm): 448 x 275 x 148

BRS 959

400 gram standard, deep drawn, wire in rim, UTI holes, plain sides



0.8 mm Aluminized steel, Safe for use with food, Lid available, Maximum heat rating of 260°C, Refurbishment available (minimum quantities may apply)



Coating Options

Natural
AMERICOAT®
OptiShield®*

*Coating shown in photo

Individual Tin Size (mm)

Top Inside: 191 x 108

Bottom Outside: 178 x 96

Depth: 116

Weight Each (kg): 2.40

Overall Size (mm): 448 x 202 x 117

LID 119

800 gram premium lid for #BRS 352 bread tin, holes over gaps between pans, welded corners



1.5 mm Aluminized steel, Safe for use with food, Maximum heat rating of 260°C, Refurbishment available (minimum quantities may apply)



Coating Options

Natural
AMERICOAT®*
OptiShield®

*Coating shown in photo

Individual Tin Size (mm)

Top Inside: 455 x 322

Depth: 24

Weight Each (kg): 2.10

Overall Size (mm): 458 x 325 x 25

LID 408

800 gram standard lid for #BRS 957 bread tin, slots over gaps between pans, welded corners



1.5 mm Aluminized steel, Safe for use with food, Maximum heat rating of 260°C, Refurbishment available (minimum quantities may apply)



Coating Options

Natural*
AMERICOAT®
OptiShield®

*Coating shown in photo

Individual Tin Size (mm)

Top Inside: 454 x 256

Depth: 25

Weight Each (kg): 1.73

Overall Size (mm): 457 x 259 x 25

Bread Tins & Lids



LID 409

800 gram long sandwich/premium lid for #BRS 958 bread tin, slots over gaps between pans, welded corners



1.5 mm Aluminized steel, Safe for use with food, Maximum heat rating of 260°C, Refurbishment available (minimum quantities may apply)



Coating Options

Natural*
AMERICOAT®
OptiShield®

*Coating shown in photo

Individual Tin Size (mm)

Top Inside: 454 x 281
Depth: 25

Weight Each (kg): 1.88

Overall Size (mm): 457 x 284 x 25

LID 410

400 gram standard lid for #BRS 959 bread tin, slots over gaps between pans, welded corners



1.5 mm Aluminized steel, Safe for use with food, Maximum heat rating of 260°C, Refurbishment available (minimum quantities may apply)



Coating Options

Natural
AMERICOAT®**
OptiShield®

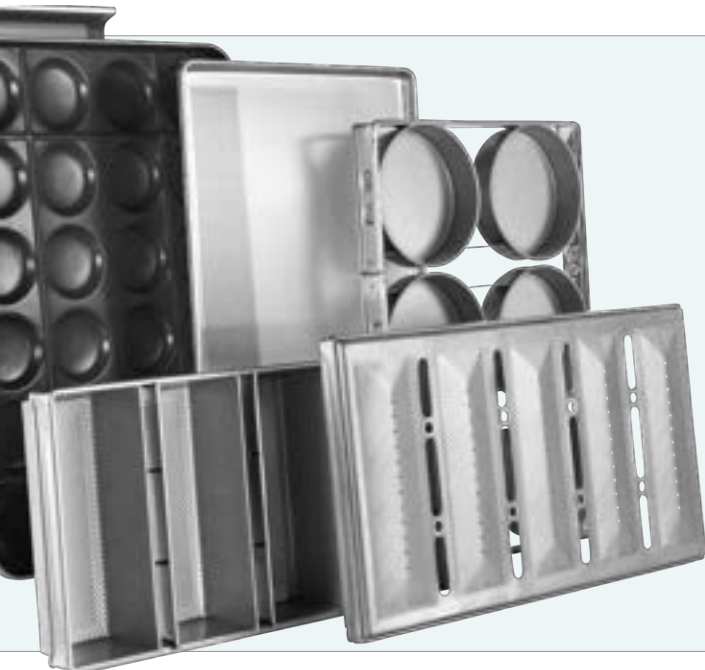
*Coating shown in photo

Individual Tin Size (mm)

Top Inside: 454 x 208
Depth: 25

Weight Each (kg): 1.42

Overall Size (mm): 457 x 211 x 25



Custom Pan Manufacturing

Need custom tray sizes, materials, mould designs, or configurations?

American Pan can design a pan to meet your specific product or operational needs. Custom pan minimum order quantities are as low as 250 on most items. We can create pans to your exact specifications including:

- **Sizes & Arrangements:** Customize your overall pan size, mould arrangements, and dimensions.
- **Mould Designs:** Create unique mould designs for signature products.
- **Materials:** Build your pan from strong and durable materials such as aluminum, aluminized steel, stainless steel, anodized aluminum, etc.
- **Pan Strengthening Options:** Enhance the strength of your pan with structural ribs, large radius corners, and more.
- **Coatings:** Select one of our proprietary coatings; AMERICOAT® glaze, OptiShield® liquid dispersion coating, or DuraShield® non-stick coating.

Baguette Trays



BAGUETTE TRAYS

BTY 544

Open ends with 3 mm aluminum strengthening bars, 5 long



2 mm Aluminum, Safe for use with food, Maximum heat rating of 230°C, Refurbishment available (minimum quantities may apply)



Coating Options

Natural*
AMERICOAT®
OptiShield®

**Coating shown in photo*

Flute Size (mm)

Top Inside: 762 x 70

Radius: 38

Depth: 23

Weight Each (kg): 2.90

Overall Size (mm): 762 x 457 x 30

BTY 545

85 mm flat channel bottom, closed ends with frame, 3 across



2 mm Aluminum, Safe for use with food, Maximum heat rating of 230°C, Refurbishment available (minimum quantities may apply)



Coating Options

Natural
AMERICOAT®
OptiShield®*

**Coating shown in photo*

Flute Size (mm)

Top Inside: 762 x 135

Radius: —

Depth: 26

Weight Each (kg): 2.92

Overall Size (mm): 762 x 457 x 30

BTY 546

Open ends, stackable, 5 long



1.5 mm Aluminum, Safe for use with food, 1.5 mm Bottom perforation, Maximum heat rating of 230°C, Refurbishment available (minimum quantities may apply)



Coating Options

Natural
AMERICOAT®*
OptiShield®

**Coating shown in photo*

Flute Size (mm)

Top Inside: 762 x 77

Radius: 49

Depth: 19

Weight Each (kg): 1.71

Overall Size (mm): 762 x 457 x 31

Bakery Rack Services

American Pan UK offers bakery rack manufacturing and refurbishment services, saving your business time and expenses while ensuring a more sanitary environment for your products and your employees. We also offer refurbished racks for purchase. Please contact us for availability and pricing information.



Baking Trays



PLAIN BAKING TRAYS

BBT 002

Stackable, 16 mm steel band in rim



0.9 mm Aluminized steel, Safe for use with food, Maximum heat rating of 260°C, Refurbishment available (minimum quantities may apply)



Coating Options

Natural*
AMERICOAT®
OptiShield®

*Coating shown in photo

Weight Each (kg): 4.52

Overall Size (mm): 762 x 457 x 28

BTY 538

4 sides turned up 90 degrees, welded corners



2 mm Aluminum, Safe for use with food, Maximum heat rating of 230°C, Refurbishment available (minimum quantities may apply)



Coating Options

Natural
AMERICOAT®
OptiShield®*

*Coating shown in photo

Weight Each (kg): 2.17

Overall Size (mm): 762 x 457 x 25

BTY 540

4 sides turned up 25 degrees



2 mm Aluminum, Safe for use with food, Maximum heat rating of 230°C, Refurbishment available (minimum quantities may apply)



Coating Options

Natural
AMERICOAT®*
OptiShield®

*Coating shown in photo

Weight Each (kg): 1.90

Overall Size (mm): 760 x 458 x 9

BTY 542

3 sides turned up 90 degrees, welded corners, one short end turned up 30 degrees



2 mm Aluminum, Safe for use with food, Maximum heat rating of 230°C, Refurbishment available (minimum quantities may apply)



Coating Options

Natural
AMERICOAT®
OptiShield®*

*Coating shown in photo

Weight Each (kg): 2.13

Overall Size (mm): 762 x 457 x 25



BTY 929

3 sides turned up 90 degrees, welded corners, one long side turned up 30 degrees



2 mm Aluminum, Safe for use with food, Maximum heat rating of 230°C, Refurbishment available (minimum quantities may apply)



Coating Options

Natural*
AMERICOAT®
OptiShield®

**Coating shown in photo*

Weight Each (kg): 2.10

Overall Size (mm): 762 x 455 x 27

PERFORATED BAKING TRAYS

BTY 539

4 sides turned up 90 degrees, welded corners



2 mm Aluminum, Safe for use with food, 3 mm Bottom perforation, Maximum heat rating of 230°C, Refurbishment available (minimum quantities may apply)



Coating Options

Natural
AMERICOAT®
OptiShield®*

**Coating shown in photo*

Weight Each (kg): 2.17

Overall Size (mm): 762 x 457 x 25

BTY 541

4 sides turned up 25 degrees



2 mm Aluminum, Safe for use with food, 3 mm Bottom perforation, Maximum heat rating of 230°C, Refurbishment available (minimum quantities may apply)



Coating Options

Natural
AMERICOAT®*
OptiShield®

**Coating shown in photo*

Weight Each (kg): 2.00

Overall Size (mm): 760 x 458 x 9

BTY 543

3 sides turned up 90 degrees, welded corners, one short end turned up 30 degrees



2 mm Aluminum, Safe for use with food, 3 mm Bottom perforation, Maximum heat rating of 230°C, Refurbishment available (minimum quantities may apply)



Coating Options

Natural
AMERICOAT®
OptiShield®*

**Coating shown in photo*

Weight Each (kg): 2.13

Overall Size (mm): 762 x 457 x 25

Bun & Roll Trays



HAMBURGER BUN TRAYS

BBT 017 Individual Moulds

Deep drawn, flat base mould, 16 mm steel band in rim, 22 mm corners, 3 rows of 5



0.8 mm Aluminized steel, Safe for use with food, Maximum heat rating of 260°C, Refurbishment available (minimum quantities may apply)



Coating Options

Natural*
AMERICOAT®
OptiShield®

*Coating shown in photo

Indent Size (mm)

Top Inside: 127
Bottom Outside: 113
Depth: 15

Weight Each (kg): 4.45

Overall Size (mm): 762 x 457 x 43

BBT 185 Individual Moulds

Deep drawn, flat base mould, 16 mm steel band in rim, 22 mm corners, structural ribs, 3 rows of 6



0.8 mm Aluminized steel, Safe for use with food, Maximum heat rating of 260°C, Refurbishment available (minimum quantities may apply)



Coating Options

Natural
AMERICOAT®
OptiShield®*

*Coating shown in photo

Indent Size (mm)

Top Inside: 102
Bottom Outside: 97
Depth: 14

Weight Each (kg): 4.49

Overall Size (mm): 762 x 457 x 42

BBT 1319 Cluster Moulds

Deep drawn, convex bases, 16 mm band in rim, 50 mm corners, 8 clusters of 4



0.8 mm Aluminized steel, Safe for use with food, Maximum heat rating of 260°C, Refurbishment available (minimum quantities may apply)



Coating Options

Natural
AMERICOAT®*
OptiShield®

*Coating shown in photo

Indent Size (mm)

Top Inside: 93
Bottom Outside: 88
Depth: 13

Weight Each (kg): 4.60

Overall Size (mm): 762 x 457 x 41

Cluster Overall Size (mm): 184 x 184

SANDWICH ROLL TRAY

BBT 359

Oval, deep drawn, 16 mm steel band in rim, 22 mm corners, 4 rows of 4



0.8 mm Aluminized steel, Safe for use with food, Maximum heat rating of 260°C, Refurbishment available (minimum quantities may apply)



Coating Options

Natural
AMERICOAT®
OptiShield®*

*Coating shown in photo

Indent Size (mm)

Top Inside: 146 x 97
Bottom Outside: 136 x 87
Depth: 13

Weight Each (kg): 4.47

Overall Size (mm): 762 x 457 x 41



HOT DOG BUN TRAYS

BBT 122 Individual Moulds

Deep drawn, 16 mm steel band in rim, 22 mm corners, 5 rows of 4



0.8 mm Aluminized steel, Safe for use with food, Maximum heat rating of 260°C, Refurbishment available (minimum quantities may apply)



Coating Options

Natural*
AMERICOAT®
OptiShield®

*Coating shown in photo

Indent Size (mm)

Top Inside: 150 x 55

Bottom Outside: 133 x 38

Depth: 12

Weight Each (kg): 4.43

Overall Size (mm): 762 x 457 x 40

BBT 632 Cluster Moulds

16 mm band in rim, 22 mm corners, 4 clusters of 9



0.8 mm Aluminized steel, Safe for use with food, Maximum heat rating of 260°C, Refurbishment available (minimum quantities may apply)



Coating Options

Natural
AMERICOAT®
OptiShield®*

*Coating shown in photo

Indent Size (mm)

Top Inside: 153 x 46

Bottom Outside: 137 x 31

Depth: 10

Weight Each (kg): 4.42

Overall Size (mm): 762 x 457 x 38

Cluster Overall Size (mm): 412 x 153

Life Cycle Management Programme

Take your pans from dirty to clean with our Life Cycle Management Programme. The pan management process is simple and tailored to your products and operating schedule. Learn more about the benefits of a Life Cycle Management Programme on page 21.



Muffin Trays



CROWN MUFFIN TRAY

MFT 032

Wire in rim, seamed cups, square corners, 6 rows of 4



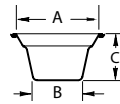
0.8 mm Aluminized steel, Safe for use with food, Maximum heat rating of 260°C, Refurbishment available (minimum quantities may apply)



Coating Options

Natural*
AMERICOAT®
DuraShield®

*Coating shown in photo



Volume (ml)**: 143

Mould Dimensions (mm)

Top Inside (A): 70

Bottom Outside (B): 52

Depth (C): 34

Centers (mm): 108 x 112

Weight Each (kg): 5.81

Overall Size (mm): 762 x 457 x 45

STANDARD MUFFIN TRAY

MFT 033

Wire in rim, seamed cups, square corners, 8 rows of 5



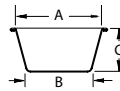
0.8 mm Aluminized steel, Safe for use with food, Maximum heat rating of 260°C, Refurbishment available (minimum quantities may apply)



Coating Options

Natural
AMERICOAT®
DuraShield®*

*Coating shown in photo



Volume (ml)**: 96.7

Mould Dimensions (mm)

Top Inside (A): 70

Bottom Outside (B): 51

Depth (C): 34

Centers (mm): 90 x 95

Weight Each (kg): 6.01

Overall Size (mm): 762 x 457 x 35

MINI-MUFFIN TRAY

MFT 034

Wire in rim, seamed cups, square corners, 8 rows of 6



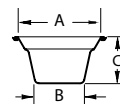
0.8 mm Aluminized steel, Safe for use with food, Maximum heat rating of 260°C, Refurbishment available (minimum quantities may apply)



Coating Options

Natural
AMERICOAT®*
DuraShield®

*Coating shown in photo



Volume (ml)**: 47.4

Mould Dimensions (mm)

Top Inside (A): 52

Bottom Outside (B): 41

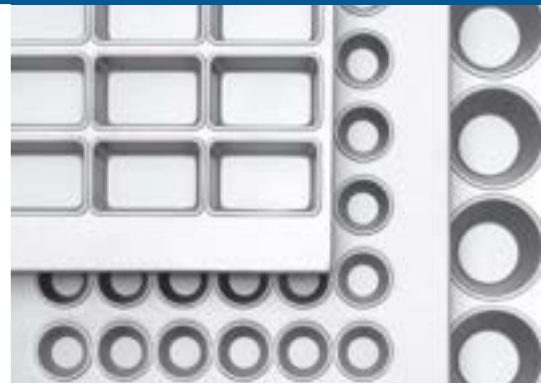
Depth (C): 29

Centers (mm): 76 x 76

Weight Each (kg): 6.15

Overall Size (mm): 762 x 457 x 29

**Volume (Vol.) indicates liquid volume of mould when filled to brim. Use 60-70% to estimate actual batter weight.



SILHOUETTE MUFFIN TRAYS

MFT 036

Notched corners, fits inside
762 mm x 457 mm baking tray**,
9 rows of 5



2 mm Aluminum, Safe for use with food,
Maximum heat rating of 230°C, Refurbishment
available (minimum quantities may apply)



Coating Options
Natural*
AMERICOAT®

*Coating shown in photo

Hole Diameter (mm): 70

Centers (mm): 84 x 90

Weight Each (kg): 1.11

Overall Size (mm): 755 x 450 x 21

MFT 037

Notched corners, fits inside
762 mm x 457 mm baking tray**,
10 rows of 6



2 mm Aluminum, Safe for use with food,
Maximum heat rating of 230°C, Refurbishment
available (minimum quantities may apply)



Coating Options
Natural
AMERICOAT®*

*Coating shown in photo

Hole Diameter (mm): 57

Centers (mm): 75 x 76

Weight Each (kg): 1.22

Overall Size (mm): 755 x 450 x 21

**See items BTY 538 and BTY 539 on page 10-11.

DuraShield® Coating

DuraShield® dark non-stick coating can virtually eliminate the need for oils and other release agents. See page 20 for more information on this coating and all other coating options.



Cake Tins



ROUND CAKE TINS

CKT 128

5" round tin, straight sides, curled edge



0.5 mm Aluminized steel, Safe for use with food, Maximum heat rating of 260°C, Refurbishment available (minimum quantities may apply)



Coating Options

Natural*
AMERICOAT®
DuraShield®

*Coating shown in photo

Volume (ml)**: 643

Mould Dimensions (mm)

Top Inside: 128
Bottom Outside: 128
Depth: 51

Weight Each (kg): 0.17

Overall Size (mm): 138 x 50

CKT 129

6" round tin, straight sides, curled edge



0.5 mm Aluminized steel, Safe for use with food, Maximum heat rating of 260°C, Refurbishment available (minimum quantities may apply)



Coating Options

Natural
AMERICOAT®
DuraShield®*

*Coating shown in photo

Volume (ml)**: 912

Mould Dimensions (mm)

Top Inside: 152
Bottom Outside: 152
Depth: 51

Weight Each (kg): 0.21

Overall Size (mm): 162 x 50

CKT 130

8" round tin, straight sides, curled edge



0.5 mm Aluminized steel, Safe for use with food, Maximum heat rating of 260°C, Refurbishment available (minimum quantities may apply)



Coating Options

Natural
AMERICOAT®*
DuraShield®

*Coating shown in photo

Volume (ml)**: 1621

Mould Dimensions (mm)

Top Inside: 203
Bottom Outside: 203
Depth: 51

Weight Each (kg): 0.32

Overall Size (mm): 213 x 50

CKT 131

10" round tin, straight sides, curled edge



0.5 mm Aluminized steel, Safe for use with food, Maximum heat rating of 260°C, Refurbishment available (minimum quantities may apply)



Coating Options

Natural
AMERICOAT®
DuraShield®*

*Coating shown in photo

Volume (ml)**: 2534

Mould Dimensions (mm)

Top Inside: 254
Bottom Outside: 254
Depth: 51

Weight Each (kg): 0.45

Overall Size (mm): 264 x 50

**Volume (Vol.) indicates liquid volume of mould when filled to brim. Use 60-70% to estimate actual batter weight.

Pizza Trays



THIN CRUST PIZZA TRAYS

BTY 936

9" round tray, perforated bottom, curled edge



1.5 mm Aluminum, Safe for use with food, 8 mm Bottom perforation, Maximum heat rating of 230°C, Refurbishment available (minimum quantities may apply)



Coating Options
Natural*
AMERICOAT®
OptiShield®

*Coating shown in photo

Mould Dimensions (mm)
Top Inside: 229
Bottom Outside: 217
Depth: 11

Weight Each (kg): 0.14

BTY 941

9" round tray, solid bottom, curled edge



1.5 mm Aluminum, Safe for use with food, Maximum heat rating of 230°C, Refurbishment available (minimum quantities may apply)



Coating Options
Natural
AMERICOAT®
OptiShield®*

*Coating shown in photo

Mould Dimensions (mm)
Top Inside: 229
Bottom Outside: 217
Depth: 11

Weight Each (kg): 0.20

BTY 934

10" round tray, perforated bottom, curled edge



1.5 mm Aluminum, Safe for use with food, 8 mm Bottom perforation, Maximum heat rating of 230°C, Refurbishment available (minimum quantities may apply)



Coating Options
Natural
AMERICOAT®*
OptiShield®

*Coating shown in photo

Mould Dimensions (mm)
Top Inside: 254
Bottom Outside: 242
Depth: 11

Weight Each (kg): 0.16

BTY 939

10" round tray, solid bottom, curled edge



1.5 mm Aluminum, Safe for use with food, Maximum heat rating of 230°C, Refurbishment available (minimum quantities may apply)



Coating Options
Natural
AMERICOAT®
OptiShield®*

*Coating shown in photo

Mould Dimensions (mm)
Top Inside: 254
Bottom Outside: 242
Depth: 11

Weight Each (kg): 0.25

Pizza Trays



BTY 935

12" round tray, perforated bottom, curled edge



1.5 mm Aluminum, Safe for use with food, 8 mm Bottom perforation, Maximum heat rating of 230°C, Refurbishment available (minimum quantities may apply)



Coating Options

Natural*
AMERICOAT®
OptiShield®

**Coating shown in photo*

Mould Dimensions (mm)

Top Inside: 305
Bottom Outside: 293
Depth: 11

Weight Each (kg): 0.23

BTY 940

12" round tray, solid bottom, curled edge



1.5 mm Aluminum, Safe for use with food, Maximum heat rating of 230°C, Refurbishment available (minimum quantities may apply)



Coating Options

Natural
AMERICOAT®
OptiShield®*

**Coating shown in photo*

Mould Dimensions (mm)

Top Inside: 305
Bottom Outside: 293
Depth: 11

Weight Each (kg): 0.34

BTY 937

14" round tray, perforated bottom, curled edge



1.5 mm Aluminum, Safe for use with food, 8 mm Bottom perforation, Maximum heat rating of 230°C, Refurbishment available (minimum quantities may apply)



Coating Options

Natural
AMERICOAT®*
OptiShield®

**Coating shown in photo*

Mould Dimensions (mm)

Top Inside: 356
Bottom Outside: 344
Depth: 11

Weight Each (kg): 0.30

BTY 942

14" round tray, solid bottom, curled edge



1.5 mm Aluminum, Safe for use with food, Maximum heat rating of 230°C, Refurbishment available (minimum quantities may apply)



Coating Options

Natural
AMERICOAT®
OptiShield®*

**Coating shown in photo*

Mould Dimensions (mm)

Top Inside: 356
Bottom Outside: 344
Depth: 11

Weight Each (kg): 0.46



BTY 841

16" round tray, perforated bottom, curled edge



1.5 mm Aluminum, Safe for use with food, 8 mm Bottom perforation, Maximum heat rating of 230°C, Refurbishment available (minimum quantities may apply)



Coating Options

Natural*
AMERICOAT®
OptiShield®

**Coating shown in photo*

Mould Dimensions (mm)

Top Inside: 404
Bottom Outside: 394
Depth: 11

Weight Each (kg): 0.38

BTY 938

16" round tray, solid bottom, curled edge



1.5 mm Aluminum, Safe for use with food, Maximum heat rating of 230°C, Refurbishment available (minimum quantities may apply)



Coating Options

Natural
AMERICOAT®
OptiShield®*

**Coating shown in photo*

Mould Dimensions (mm)

Top Inside: 404
Bottom Outside: 394
Depth: 11

Weight Each (kg): 0.59

Request a Free Quote

Choose the bakeware that's right for your business and select from all of our proprietary coating options online at americanpan.com/stock. Here, you'll have access to all of our pan options and any updated pan information.



World-Class Coatings



Our coating options for new and refinished bakeware consistently deliver more releases, sometimes twice the releases, than all other competitors worldwide. Our extensive recoating facilities and Life Cycle Management Programme provide bakeries with a cost-effective solution to baking pan management.

American Pan® Coatings

Below is a table showing characteristics of our standard pan coatings. Please note, all of our pans are stocked natural and will have coatings applied once ordered.

Pan Coating	Standard Colour	Approximate # of Releases*	Recoating Available
Silicone Glaze			
AMERICOAT® silicone glaze coating can be used for virtually any product and can significantly reduce the amount of oil needed for your baking process.	Clear	300 - 600	Brazil, Canada, Colombia, Mexico, UK, & USA
Rubberized Silicone			
FlexiCoat rubberized silicone coating is a popular choice for coating baguette trays, baking screens, and other perforated trays to provide specific baking characteristics and results.	Black	800 - 2000	Brazil & Spain
RilonElast rubberized silicone coating is used on a variety of tins or trays and is formulated to provide easy release of a wide range of baked goods.	Red	800 - 2000	Sweden & UK
Specialty Fluoropolymer			
OptiShield® fluoropolymer coatings have been developed to provide a durable solution for conditions where a standard coating will not perform. Whether you have an extremely sticky dough or extreme temperatures, we have a formulation that will work for your operation.	Grey/Black	1500 - 3500	Brazil, Mexico, Romania, Spain, UK, & USA
Premium Fluoropolymer			
DuraShield® coatings provide the longest lasting release life and the best release characteristics for baked goods from buns and rolls to breads and cakes.	Dark Green/Black	2500 - 5000	Brazil, Mexico, Romania, Spain, UK, & USA

*Note that this is an approximate number and may not be the exact number of releases achieved.

Handling Procedure Guidelines

For complete handling procedure guidelines for any of our coated pans, please visit coatings.americanpan.com.

Bakeware Refurbishment



We've perfected the process for cleaning and recoating baking pans through almost 50 years serving some of the world's largest and most demanding bakeries. Our exclusive methodology and coatings prolong pan life and restore optimal performance.

Key Benefits



Reduced Costs

It has been proven that this service will reduce your operating costs by 15-40% due to reduced oil and parchment paper usage, pan discarding, etc.



Increased Sustainability

Make a positive impact on the environment by reducing oil and parchment paper usage, and extending the life of your bakeware.



Increased Efficiency

The continuous cycle ensures that your bakery is consistently operating with pans at optimal performance.



Improved Product Quality

Clean and hygienic pans result in improved product quality and reduces the need to throw away products unworthy of selling.



Dedicated Inventory

Your pan inventory ensures that we can replace old, worn out baking pans in a timely manner and your bakery will always have the right number of pans needed to produce high-quality products.



Dedicated Account Manager

With the help of a single dedicated and knowledgeable account manager, your bakery will receive the support and guidance that it needs.

Life Cycle Management Programme

Our Life Cycle Management Programme was created to provide customers with a rotating supply of high performing bakeware and coatings resulting in optimal operational efficiency and product quality.

The pan management process is simple and tailored to your products and operating schedule.

Purchase Pans: New pans are purchased for use at your bakery and for rotating supply kept at one of our pan refurbishment facilities. Pans can be purchased from one of our stock catalogues or be a custom pan.*

*minimum quantities apply

Scheduled Service: At scheduled times, our dedicated fleet will pick up your used bakeware and drop off pans from your purchased stock.

Ready Supply: The used pans are brought to our designated facility to be inspected and straightened (optional), cleaned, and recoated so that they are ready to deliver on your next scheduled pick-up date.



The Bundy Baking Solutions CREED



American Pan®

Industrial Baking Pans & Coatings

Brazil | Ireland | Romania | Spain
UK | USA



Chicago Metallic

Commercial & Foodservice Bakeware

Canada | USA



DuraShield®

Non-Stick Coatings



Pan Glo®

Pan Cleaning & Recoating

Canada | Colombia | Mexico
UK | USA



Runex

Baking Equipment & Coatings

Norway | Sweden



Synova

Release Agents

● Manufacturing Plants | ● Sales Offices | ● Service Locations

It is our mission to be the most trusted supplier of essential equipment, bakeware, coatings, and services to bakers around the world. We will achieve this by living out our CREED, a commitment to ourselves and to the industries we serve.



- **Commitment:** We are committed to making products that our customers need at a level of quality they deserve. We want to make a positive difference in the operations of our customers.
- **Respect:** We respect our customers and are grateful for the opportunities given to us. Each customer is different and we work to earn their support.
- **Family Environment:** We are a family business and believe in the value of relationships. We make a genuine effort to know our customers and the challenges they face so that we can come together as a team.
- **Excellence:** We are driven to constantly move forward and pursue excellence every day. We believe that what our customers do is important and what we do is important; therefore, it is important to always do it right.
- **Personal Development:** We constantly develop our people and our processes to be the best at what we do and provide the best products to our customers.

Product Index

Item #	Description	Page #	Item #	Description	Page #
BBT 002	Plain Baking Tray	10	BTY 545	Baguette Tray with 3 Across Channels	9
BBT 017	5" Hamburger Bun Tray with 15 Moulds	12	BTY 546	Baguette Tray with 5 Long Channels	9
BBT 122	Hot Dog Bun Tray with 20 Moulds	13	BTY 841	16" Perforated Pizza Tray	19
BBT 1319	Cluster Hamburger Bun Tray with 32 Moulds	12	BTY 929	3-Sided Plain Baking Tray	11
BBT 185	4" Hamburger Bun Tray with 18 Moulds	12	BTY 934	10" Perforated Pizza Tray	17
BBT 359	Oval Sandwich Roll Tray with 16 Moulds	12	BTY 935	12" Perforated Pizza Tray	18
BBT 632	Cluster Hot Dog Bun Tray with 36 Moulds	13	BTY 936	9" Perforated Pizza Tray	17
BRS 283	800 Gram Farmhouse 3-in-Line Bread Tin	6	BTY 937	14" Perforated Pizza Tray	18
BRS 284	400 Gram Farmhouse 3-in-Line Bread Tin	6	BTY 938	16" Solid Pizza Tray	19
BRS 352	800 Gram Premium 3-in-Line Bread Tin	6	BTY 939	10" Solid Pizza Tray	17
BRS 957	800 Gram Standard 3-in-Line Bread Tin	6	BTY 940	12" Solid Pizza Tray	18
BRS 958	800 Gram Premium 3-in-Line Bread Tin	7	BTY 941	9" Solid Pizza Tray	17
BRS 959	400 Gram Standard 3-in-Line Bread Tin	7	BTY 942	14" Solid Pizza Tray	18
BTN 167	400 Gram Standard Bread Tin	4	CKT 128	5" Round Cake Tin	16
BTN 170	800 Gram Premium Bread Tin	4	CKT 129	6" Round Cake Tin	16
BTN 172	400 Gram Farmhouse Bread Tin	4	CKT 130	8" Round Cake Tin	16
BTN 173	800 Gram Farmhouse Bread Tin	4	CKT 131	10" Round Cake Tin	16
BTN 777	800 Gram Standard Bread Tin	5	LID 119	800 Gram Premium Lid for BRS 352 Bread Tin	7
BTN 778	800 Gram Premium Bread Tin	5	LID 408	800 Gram Standard Lid for BRS 957 Bread Tin	7
BTN 779	400 Gram Standard Bread Tin	5	LID 409	800 Gram Premium Lid for BRS 958 Bread Tin	8
BTY 538	4-Sided Plain Baking Tray	10	LID 410	400 Gram Standard Lid for BRS 959 Bread Tin	8
BTY 539	4-Sided Perforated Baking Tray	11	MFT 032	Crown Muffin Tray with 24 Moulds	14
BTY 540	4-Sided Peel Lip Plain Baking Tray	10	MFT 033	Standard Muffin Tray with 40 Moulds	14
BTY 541	4-Sided Peel Lip Perforated Baking Tray	11	MFT 034	Mini-Muffin Tray with 48 Moulds	14
BTY 542	3-Sided Plain Baking Tray	10	MFT 036	Silhouette Muffin Tray with 45 Moulds	15
BTY 543	3-Sided Perforated Baking Tray	11	MFT 037	Silhouette Muffin Tray with 60 Moulds	15
BTY 544	Baguette Tray with 5 Long Channels	9			



American Pan[®] UK

Industrial Baking Pans & Coatings

A BUNNY BAKING SOLUTION

Direct Contacts: jhughes@americanpan.com | zclarke@americanpan.com

6-8 Seddon Place | Stanley Industrial Estate | Skelmersdale WN8 8EB | United Kingdom
+44 (0) 1695 50500 | bakeware@americanpanuk.com | americanpan.com | [in](#) [f](#)

